

Date Installed: 9-29-06
Installed by: Lingvia Excavating, Inc.
Inspected by: Rex Moll

Res # 524
Wayne St.

stone
Driveway

Ex. $\frac{3}{4}$ " galv.
New 1" curb
stop

Ex. 4" vit
san.

4" el. to 6" pl.
Ferno

6" c/d 4.5' Deep
Elev. 653.77

40'

B/c
↓

8" san.
main
↓

Flow

6"-22 $\frac{1}{2}$ " Bend
Elev. 649.17

6"-45° Bend

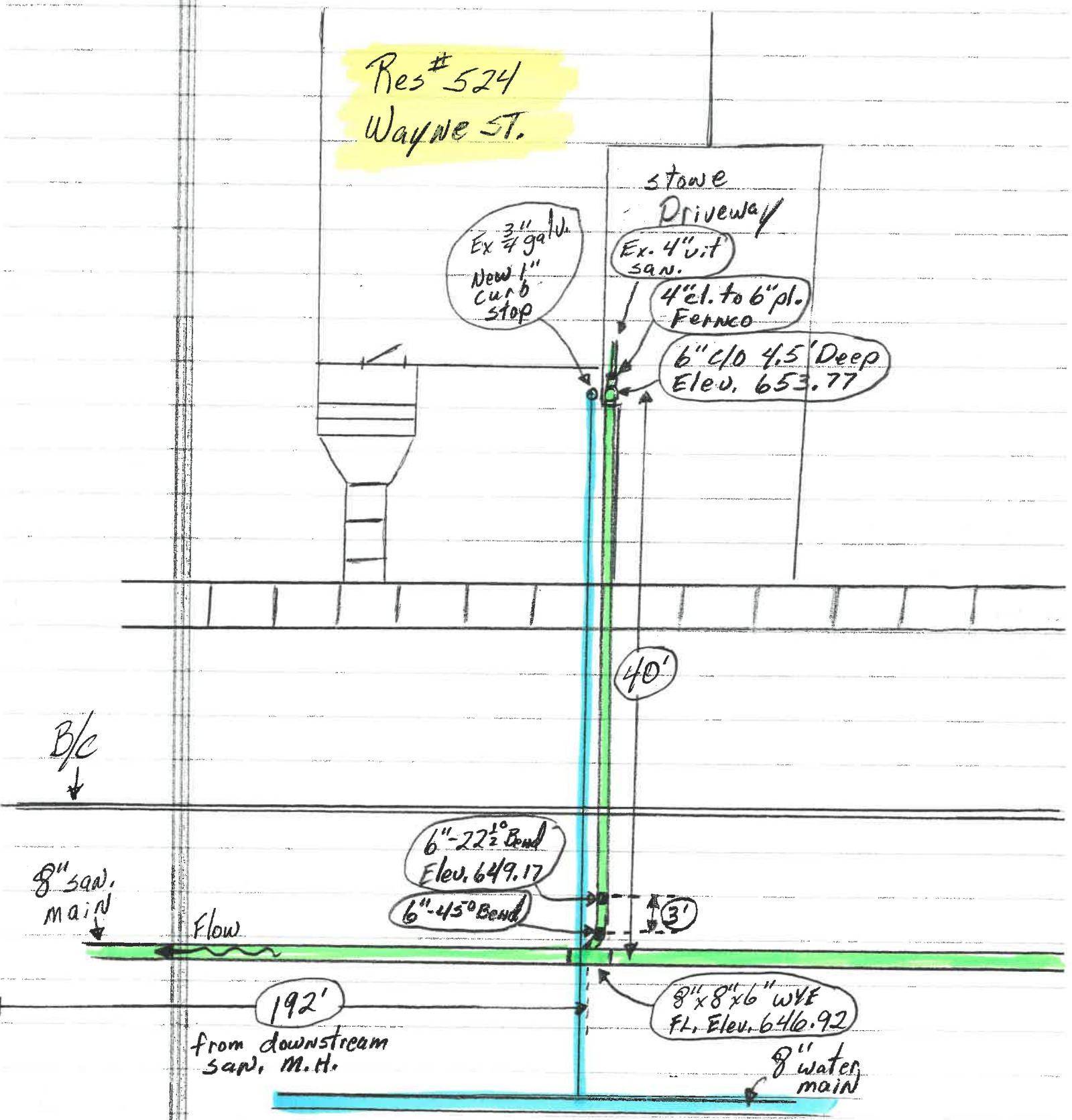
3'

192'

from downstream
san. M.H.

8" x 8" x 6" WYE
Fl. Elev. 646.92

8" water
main
↓



Date Installed: 9-29-06
 Installed by: Lingua Excavating, Inc.
 Inspected by: Rex Moll

Res # 524
 Wayne St.

